



## TECHNICAL SHEET

*We thank you for carefully reading this technical sheet to guarantee the comfort of the team and the success of the show. We remind you that this document and its annexes form an integral part of the contract and must be returned to us initialed and signed.*

*Please follow the technical sheet as closely as possible and notify the general manager in the event of an inability, even partial. Any modification must be reported to him and noted on this technical sheet.*

Update June 2024

### Show information:

Show for 3 artists and 1 technician.

This show can be performed on a theater stage or in any other location. No technical grill required.

**Black imperative.**

Duration: approximately 60 minutes

Touring staff: 3 artists, 1 technician, 1 broadcast manager. Please check the number of people present with our distribution manager.

### Contacts

Technician : Pierre-Jean FAGGIANI / +33 678 91 77 53 / [technique.armour@gmail.com](mailto:technique.armour@gmail.com)

Diffusion manager : Anaïs LONGIERAS / +33 617 15 39 38 / [diffusion.armour@gmail.com](mailto:diffusion.armour@gmail.com)

## STAGE SPACE AND LEVELS (see appendix 1)

The ground must be **flat, smooth and level**.

In case of hard ground (if it is not wood), it will be necessary to provide a floor between the three stands, including the scenographic elements. Please keep the company manager informed of the nature of the soil.

Minimum height: 4.5m

### Bleachers:

The ARMOUR show is a **tri-frontal** show, the organizer is asked to provide the stands necessary for this device.

If the performance venue is already equipped with a stand, it can obviously be used.

*Note: If this existing stand is below the plateau, please contact the company manager to study the use of this stand, or the need to build a third.*

The stands must respect a certain **proximity** to the stage space (1.5m max) the number of ranks must be discussed with the company manager.

The seats of the stands have a maximum opening of 6m50 in order to have optimal visibility for the entire public and a spacing of 40cm between each row is preferable.

### Stage Space (space between the stands):

**Stage:** regular **hexagon** of 3.33m side (gray on the plan) in woven metallic gray dance mat + 1 cm thick cushioning underlay (provided by the company)

**Technical and scenographic elements:** between the three stands are 3 structures (provided by the company) which serve both as scenographic elements, but also as supports for projectors or control:

- Cyclodes structure:
  - o Dimensions: h 2.5m / w 1.2m / d 0.8m
  - o Support for 6 Cyclodes
  - o Control room (sound and light departures)
- PAR structure (*cf annexe 4*):
  - o Dimensions: h 4.0m / w 1.8m / d 1.4m
  - o Support for 3 PAR 64
  - o Projection screen and integrated LED projectors (provided)
- Cube structure (*cf annexe 4*):
  - o Dimensions: h 1m / l 1m / d 1m
  - o Projection screen and integrated LED projectors (provided)

ARMOUR – Arno Ferrera + Gilles Polet

Technical and General supervisor : Pierre-Jean FAGGIANI / +33 678 91 77 53 / [technique.armour@gmail.com](mailto:technique.armour@gmail.com)

Diffusion manager : Anaïs LONGIERAS / +33 617 15 39 38 / [diffusion.armour@gmail.com](mailto:diffusion.armour@gmail.com)

Production : Les Halles de Schaerbeek, rue de la Constitution 20, 1030 SCHAERBEEK

## LIGHT REQUESTED FROM THE ORGANIZER (see appendix 2)

- 9 graduated circuits (1kW per circuit) + circuits for public lighting
- 3 PAR64 CP62 + counterplate hooks (parrot)
- 6 Cycliodes 1kW Asymmetric ADB + counterplate hooks
- 8 “large” counter-plate hooks (PC type) for hanging our lights
- 4 smaller hooks with counterplate
- gels:
  - LF711: 3 PAR + 2 Cycliodes
  - LF142: 2 Cycliodes
  - LF601: 2 Cycliodes
  - #119: 3 PAR + 6 Cycliodes
  - LF269/Heatshield: 3 PAR
- Provide bleacher lighting (if possible 6 ADB cyclodes above the LF053 bleachers) + DMX controllable circulation
- departures of DMX signals in control room (struct. Cycliodes):
  - 1 traditional start
  - 1 or 2 LED departures

We come with:

- 2 OVATION CYC3 – Chauvet
- 4 OVATION CYC1 – Chauvet
- 2 colordashes Batten H12 – Chauvet
- 2 QUAD ZOOM PARKS – Chauvet
- 2 LED strip ramps (on the ground at the edge of the platform)
- control computer + ENTTEC box
- 1 Novation controller
- 1 splitter

## SOUND REQUESTED FROM THE ORGANIZER (see appendix 3)

- 6 12-inch speakers (rigorously identical) on stands high enough to pass above the last row (2 speakers at the back of each tier), with ad hoc amplification, filter, cabling. Important: if amplifiers cannot be isolated from the public, avoid devices with noisy ventilation.
- 1 console capable of managing 6 IN / 6 OUT outside the stage space (rear of the stands)
- XLR cables of different lengths (Control room -> Console + Console -> DB tech amps and subs)

We come with:

- 3 DB Technology ES1203 kits (sub + 2 heads): the subs will be at the back of each stand, the heads at the edge of the track (sub-head connection provided by the company)
- a computer for Live + sound card
- 1 Korg Nano controller

ARMOUR – Arno Ferrera + Gilles Polet

Technical and General supervisor : Pierre-Jean FAGGIANI / +33 678 91 77 53 / [technique.armour@gmail.com](mailto:technique.armour@gmail.com)

Diffusion manager : Anaïs LONGIERAS / +33 617 15 39 38 / [diffusion.armour@gmail.com](mailto:diffusion.armour@gmail.com)

Production : Les Halles de Schaerbeek, rue de la Constitution 20, 1030 SCHAERBEEK

## OTHERS

- Electricity:
  - o the management is integrated into the Cycliodes structure. There will therefore be a need for 2 16A 220V electrical inlets (sound + light) at this location.
  - o 1 16A 220V electrical inlet per PAR and CUBE structure.
  - o 1 16A 220V electrical inlet by LED ramp on the ground
  - o 1 16A 220V electrical inlet per Sub at the back of each stand
- Material to be provided:
  - o 2 rolls of tape for black dance mats
  - o need a chair (simple, simple and not noisy) for the control room
  - o a broom + mop
  - o A large stepladder (max height of PAR: 4m)
  - o 1 pallet truck
- A dressing room for 3 people with shower and toilet nearby with 1 clothes rack + 10 hangers
- Access to a water tap or water fountain + sufficient glasses during the entire presence of the Company. As much as possible, we want to avoid small plastic water bottles as much as possible.
- Catering with coffee, tea, cheese, cold meats, bread, fruit and small sweets is welcome (if possible local and organic).
- If possible, 1 WiFi access or wired internet connection nearby

### Delivery and storage of equipment:

The show material is transported directly from the last performance location to the next performance location, for ecological and economic reasons.

Please contact the general manager to discuss with him your possibilities for reception and/or storage of equipment:

- 1 pallet 2m long / 1m wide / 1.5m high
- 6 flight cases on wheels:
  - o 1x 1.8m long / 0.8m wide / 0.8m high
  - o 1x 0.8m long / 0.6m wide / 1m high
  - o 2x 0.7m long / 0.5m wide / 0.8m high
  - o 2x 1.2m long / 0.6m wide / 0.5m high (stackable)
- 3 rolls of dance mats (maximum length 1.60m) stackable on flight cases

ARMOUR – Arno Ferrera + Gilles Polet

Technical and General supervisor : Pierre-Jean FAGGIANI / +33 678 91 77 53 / [technique.armour@gmail.com](mailto:technique.armour@gmail.com)

Diffusion manager : Anaïs LONGIERAS / +33 617 15 39 38 / [diffusion.armour@gmail.com](mailto:diffusion.armour@gmail.com)

Production : Les Halles de Schaerbeek, rue de la Constitution 20, 1030 SCHAERBEEK

## SCHEDULE AND STAFF

Hanging and assembly of the stands before the arrival of the Company

### D-1\*:

Arrival company

### D-Day :

8:30 a.m.-9 a.m.: 1 person (RG or Stage Manager): unloading of company equipment, layout of stage and scenographic space, team meeting

9 a.m.-1 p.m.: technical assembly: 2 stagehands + 1 sound manager + 1 lighting manager

2 p.m.-4 p.m.: adjustments and finishing touches: 1 stage manager + 1 lighting manager

4 p.m. until performance: rehearsals: 1 reception manager

Evening: performance: 1 sound manager + 1 lighting manager + 4 people public reception\*\*

### The following days:

2 p.m.-7 p.m.: 1 reception manager

Evening: performance: 1 sound manager + 1 lighting manager + 4 people public reception\*\*

Dismantling and loading (duration approximately 2 hours): 2 stagehands + 1 sound manager + 1 lighting manager

\*Pre-editing can be done the day before the performance. In this case, please contact the general manager.

\*\*At each performance, a minimum of 3 people inside the stands to guide the audience and facilitate their installation. Brief 30 minutes minimum before public entry.

Please note, people scanning/stumping and distributing room sheets are not counted.

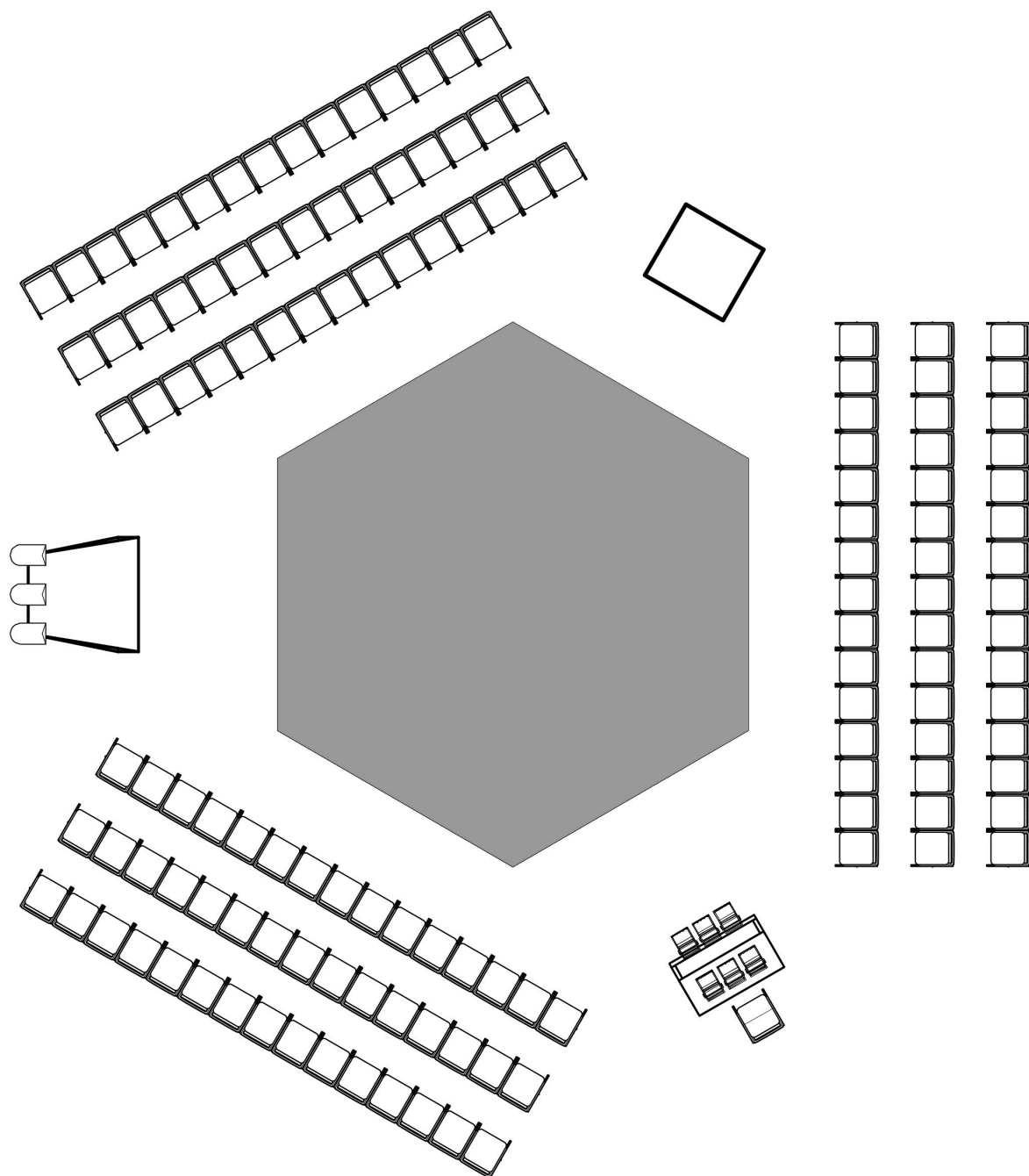
ARMOUR – Arno Ferrera + Gilles Polet

Technical and General supervisor : Pierre-Jean FAGGIANI / +33 678 91 77 53 / [technique.armour@gmail.com](mailto:technique.armour@gmail.com)

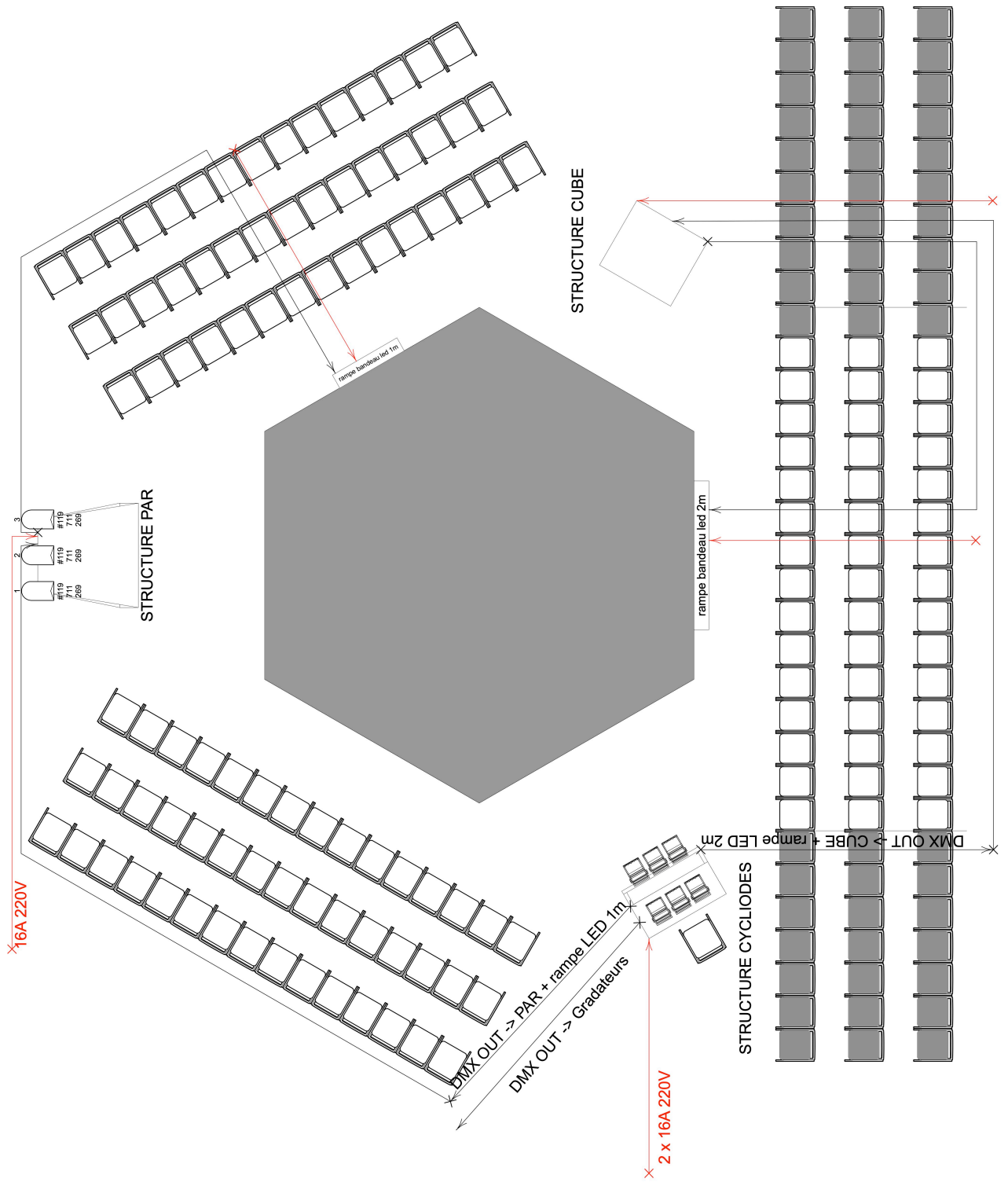
Diffusion manager : Anaïs LONGIERAS / +33 617 15 39 38 / [diffusion.armour@gmail.com](mailto:diffusion.armour@gmail.com)

Production : Les Halles de Schaerbeek, rue de la Constitution 20, 1030 SCHAERBEEK

Appendix 1 : example of scenography and bleacher layout

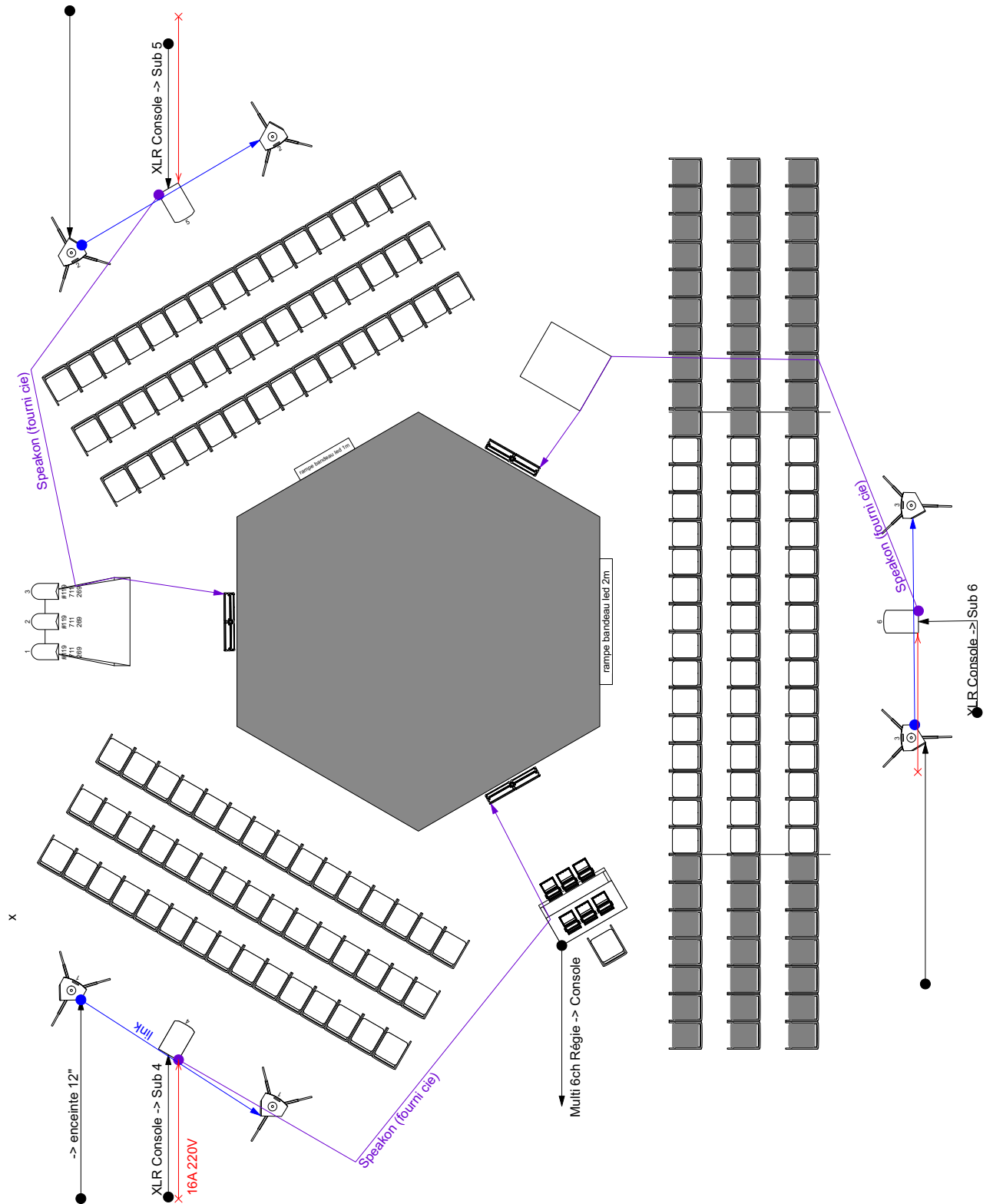


## Appendix 2 : Lights





## Appendix 3 : Sound





## Appendix 4 : pictures



*STRUCTURE PAR 1*



*STRUCTURE CUBE 1*



*General view 1*



*General view 2*

ARMOUR – Arno Ferrera + Gilles Polet  
Technical and General supervisor : Pierre-Jean FAGGIANI / +33 678 91 77 53 / [technique.armour@gmail.com](mailto:technique.armour@gmail.com)  
Diffusion manager : Anaïs LONGIERAS / +33 617 15 39 38 / [diffusion.armour@gmail.com](mailto:diffusion.armour@gmail.com)  
Production : Les Halles de Schaerbeek, rue de la Constitution 20, 1030 SCHAERBEEK